

Mimitakara® JAPAN



www.mimitakara.com

- Keep the device dry.
- Keep the device away from high temperature areas.
- Ensure the earphones are fitted securely in the ear to reduce sound leak.

Quick Find

1. ACCESSORIES	P1
2. FEATURES	P2
3. SET UP	P4
3.1 Wearing Instructions	P4
3.2 Recharging Instructions.....	P7
3.3 Switching Between Modes..	P9
4. PAIRING BLUETOOTH	P10
5. SAFETY AND MAINTENANCE	P12
5.1 Ear Bud Maintenance	P12
5.2 Battery Maintenance.....	P14
5.3 LED Indicator Status.....	P15
6. SPECIFICATION	P16
7. WARNING AND REMINDER	P18

1. ACCESSORIES

- ① 3 x Additional pair of (L & M & Tiny) size ear buds
- ② 5 x Different multi-color covers
- ③ 1 x Cleaning Brush
- ④ 1 x USB Power Adapter
- ⑤ 1 x USB Cable
- ⑥ 1 x Main unit with ear buds (S size)



7. WARNING AND REMINDER

- Do not listen for excessive time periods.
- Do not attempt to fix the unit yourself.
- Avoid liquids near the device.
- Avoid overcharging the battery.
- Keep away from direct sunlight.
- Keep the device out of reach of children.
- Do not attempt to open, fix, replace or remove any of the components.
- Avoid excessive volume levels and prolonged periods of use.
- Avoid using the device while you are sleeping.

2. FEATURES

Storage Humidity

30% ~ 85%

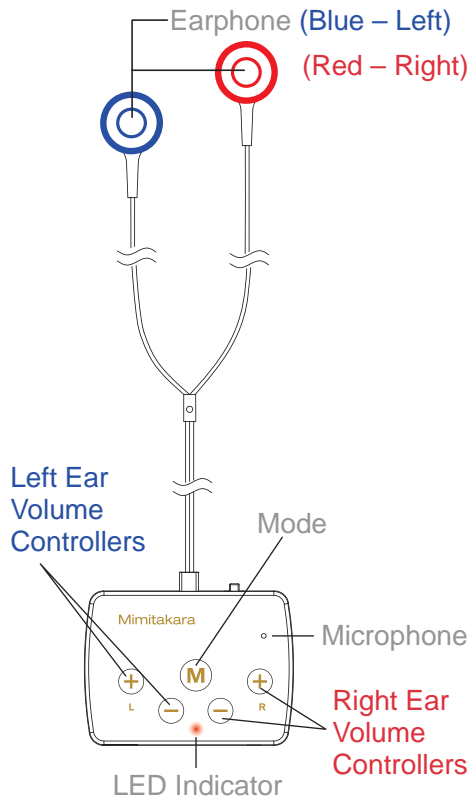
Dimensions

1.8 x 1.3 x 0.6 inches

Weight

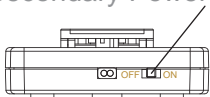
0.8 ounce

Made In Taiwan

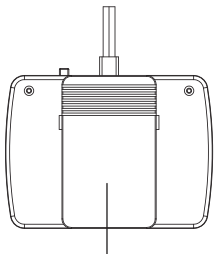


<Top>

Secondary Power Switch



<Back>

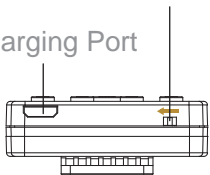


Collar / Pocket Clip

<Bottom>

Master Power Switch

Charging Port



6. SPECIFICATION

Max Output

135 ± 5 dB @ SPL 90 dB

Gain

60 ± 5 dB

Continuous Use

10 Hours

Environmental Mode

2 Modes

Volume Levels

32

Operating Temperature

50°F ~ 104°F

Operating Humidity

30% ~ 85%

Storage Temperature

14°F ~ 140°F

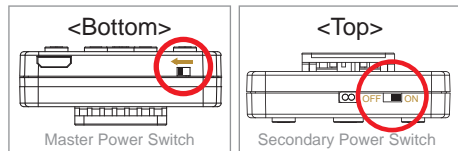
5.3) LED Indicator Status

- Solid **RED** : Charging
- Solid **BLUE** : Full Charged
- Slow Flashing **BLUE** :
Connected with Bluetooth device.
- Slow Flashing **PURPLE** :
Unit is ON.
- Fast Flashing **RED** and **BLUE** :
Searching to be paired by Bluetooth.
- Slow **RED**, **PURPLE** & **BLUE** :
There is media playing on the host device.

3. SET UP

3.1 Wearing Instructions

- 1) Securely fit the **RED** earphone into the **RIGHT** ear and the **BLUE** earphone into the **LEFT** ear.
- 2) Turn the unit ON by sliding the **Master Power Switch** in the direction of the display arrow. Then switch the **Secondary Power Switch** ON. The LED Indicator light will flash **PURPLE** in long intervals.



3.3 Switching Between Modes

- 1) There are 2 pre-set Modes on Mimitakara DP-6K5A (Standard Mode & Noise Cancelling Mode).
- Standard Mode: Mostly used indoors where the environment is not too noisy.
 - Noise Cancelling Mode: Used in louder environment such as outdoor public areas and restaurants.



- 2) To switch between the 2 modes click the (M) button (located in the center of the Mimitakara DP-6K5A device). A beep will be heard when switching between the 2 modes.

4. PAIRING BLUETOOTH

- 1) Have both devices within arm's length of each other.
- 2) Turn on Mimitakara DP-6K5A and hold down (M) until the LED flashes **BLUE** and **RED**.
- 3) Turn ON the Bluetooth function on your mobile device.
- 4) Scan for nearby devices.

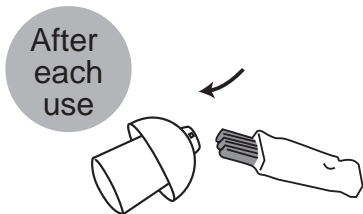
3) The Mimitakara DP-6K5A has individual ear adjustable volume settings, adjust the volume for each ear independently to suit your preferred specification. When the unit is turned off at the Secondary Power Switch it will resume from its previous setting after it is turned back on. Should you want to reset the unit back to its factory settings, simply turn the unit off from the Master Power Switch and back on again to reset.

CAUTION: LISTENING AT HIGH VOLUMES MAY DAMAGE YOUR HEARING

5.2 Battery Maintenance

- We suggest recharging Mimitakara DP-6K5A regardless of its battery status before sleeping at night.
- Do not attempt to remove the battery as this may cause damages to Mimitakara DP-6K5A device or injuries.
- Ensure the device is fully charged before removing it from charging.

- After each use: Remove all remaining debris from the ear bud after each use. Ensure that the hole on the side of the bud is also free from any debris.



Use the cleaning brush to clean any earwax adhered on the ear bud, especially in and around the ear bud.

- 4) We suggest clipping the device to the outside shirt pocket or collar to avoid it from rubbing against objects to reduce the static sounds. Ensure the microphone is not obstructed for optimum sound quality.



3.2 Recharging Instructions

1) Charging the battery before use is recommended but not required.

Mimitakara DP-6K5A comes pre-charged however initial charge will vary.

2) Ensure the Master Power Switch is switched ON in the direction of the arrow.

3) When plugged into a power source:



Solid **RED** LED Indicator:
Charging

device will automatically switch back to being its primary function until the connected device starts playing media or receives a phone call again. Should the Bluetooth be disconnected due to range or any other reason, reconnect Mimitakara DP-6K5A with the device that you wish to pair it with.

5. SAFETY AND MAINTENANCE

5.1 Ear Bud Maintenance

- Before each use: Clean your ear thoroughly.

Before
each
use



- 5) Pair with Mimitakara DP-6K5A.
- 6) Once successfully paired your phone will show that the status is “Connected” with “Mimitakara DP-6K5A” and the device will start to flash **BLUE**.



Paired devices will remember each other unless pairing information is deleted, so there is no need to pair again. When the Bluetooth device that is connected to Mimitakara DP-6K5A is not playing any sort of media, the



Solid **BLUE** LED Indicator:
Fully Charged

- 4) 3+ hrs for full charge gives up to 10 hours of use.

